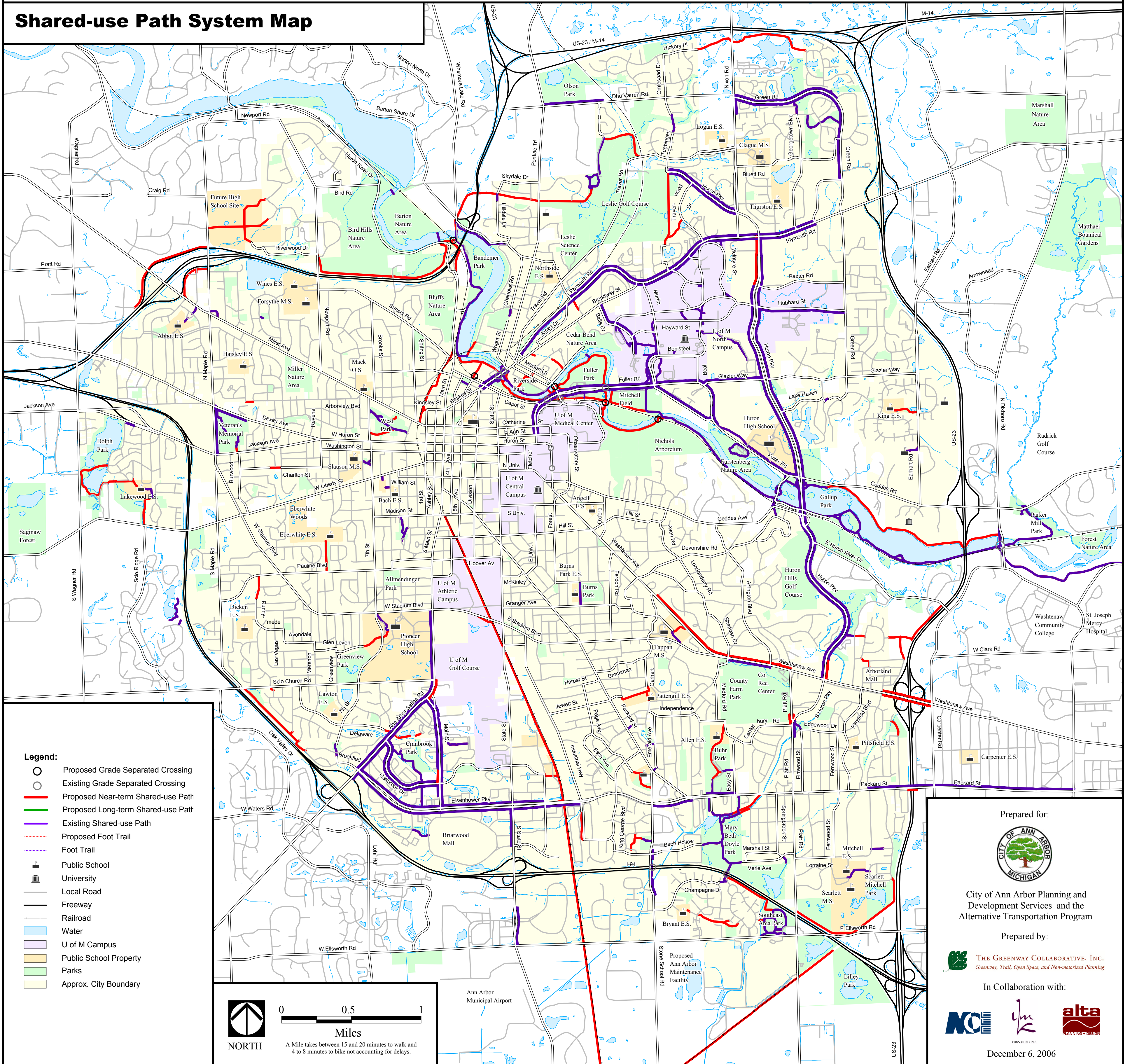


City of Ann Arbor Non-motorized Transportation Plan 2007

Shared-use Path System Map



- Legend:**
- Proposed Grade Separated Crossing
 - Existing Grade Separated Crossing
 - Proposed Near-term Shared-use Path
 - Proposed Long-term Shared-use Path
 - Existing Shared-use Path
 - Proposed Foot Trail
 - Foot Trail
 - Public School
 - University
 - Local Road
 - Freeway
 - Railroad
 - Water
 - U of M Campus
 - Public School Property
 - Parks
 - Approx. City Boundary



0 0.5 1
Miles

A Mile takes between 15 and 20 minutes to walk and 4 to 8 minutes to bike not accounting for delays.

Prepared for:



City of Ann Arbor Planning and Development Services and the Alternative Transportation Program

Prepared by:



In Collaboration with:



December 6, 2006