

CITY OF BIRMINGHAM MULTIMODAL TRANSPORTATION PLAN / ? D b =

PRELIMINARY PLAN OPEN HOUSE RESULTS

March 6, 2013



for consideration by:



submitted by:



**THE GREENWAY
COLLABORATIVE, INC.**



INTRODUCTION

OVERVIEW

A Preliminary Plan Open House was held on February 28, 2013, with two identical sessions held from 3:00 PM to 5:00 PM and from 7:00 PM to 9:00 PM at the Baldwin Public Library for the # " " U The total attendance for both sessions was thirty-eight people. Each session began with a short presentation of the preliminary plan recommendations. Following the presentation, ten stations were set up around the room to collect comments to help build a consensus.

7) 7 ion and materials are available to download from the project website <http://www.greenwaycollab.com/Projects/Birmingham/BMMTP.html>

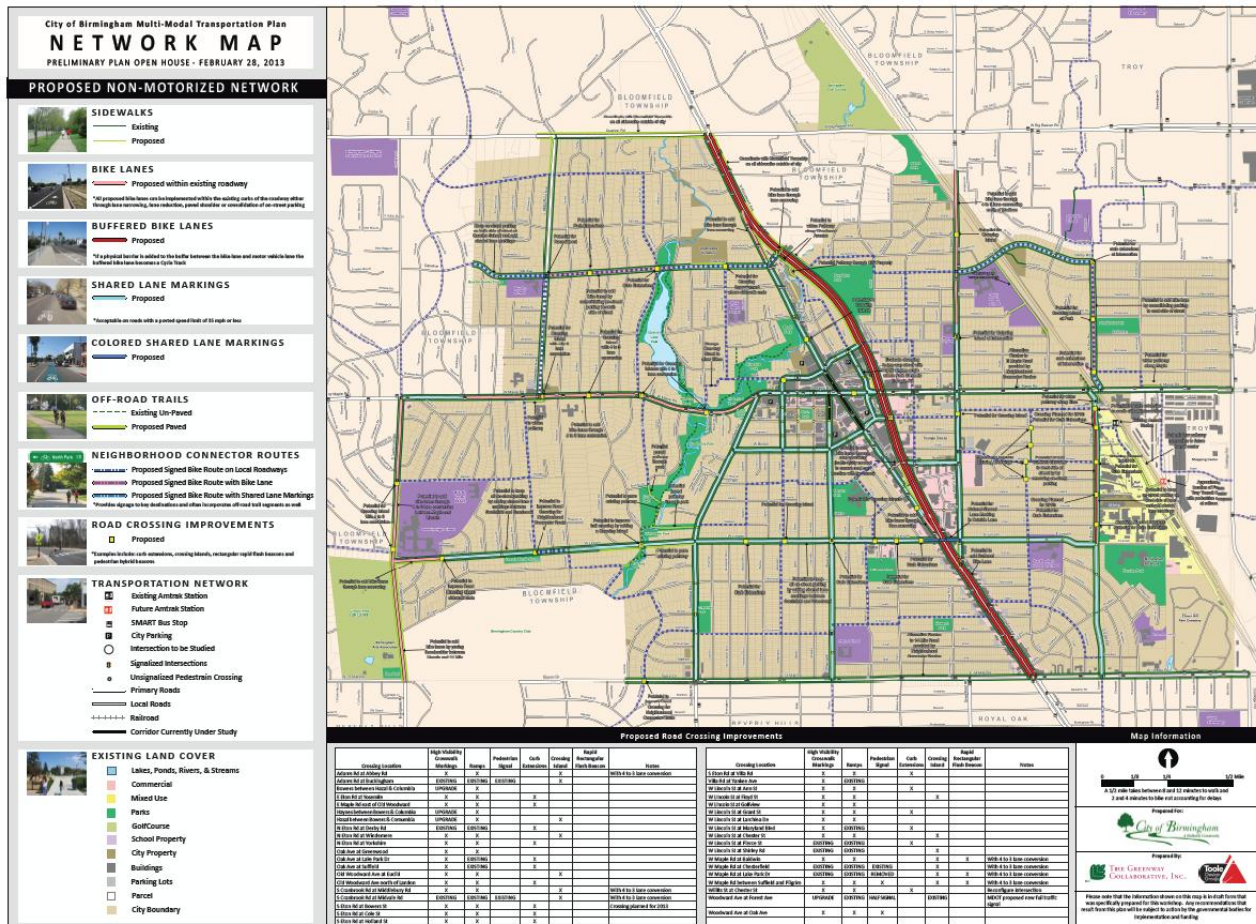
LIST OF FIGURES

The following pages document the input that was collected during the workshop.

< Network Map.....	2
< Signalized Intersection Recommendations.....	4
< Downtown Map.....	6
< ADA Transition Plan.....	7
< S. Eton Rd.....	8
< Four-Lane to Three-Lane Conversions.....	10
< Lincoln Street.....	12
< Woodward Corridor.....	14
< Policy, Environment, Programs and Outcomes.....	16
< Phase 1 Implementation Plan.....	17

CITY OF BIRMINGHAM MULTI-MODAL TRANSPORTATION PLAN / ? D b = COMMUNITY VISIONING WORKSHOP RESULTS

NETWORK MAP



Participants Comments:	Number of Participants that AGREED	Number of Participants that DISAGREED
1. High level of fast traffic on N Etowah parking needed on both sides with shared lane marking like the curb extensions and love the island at Graefield	1	0
2. No paved path through playground/field at Derby Middle School disruptive to activities. Little bike traffic on Westboro	2	0
3. Make Bates between Maple and Miller a shared lane bike route	2	0
4. Issue with proposed bike lanes on Lincoln between Cranbrook Rd and Golfview due to buses in the AM and PM. Please review conditions and school drop off	3	0
5. Please provide signal prioritization equipment for the f	4	0

Trucks this will make it safer to cross Southfield at Lincoln Pierce and Lincoln and Woodward and Lincoln		
6. There is a proposed path through Kenning Park access neighborhood to the south	4	1
7. Speeding on Eton south of Lincoln traffic calming needed	5	0
8. Do not reduce lanes on Adams or mark shared lanes unless address congestion problem at Lincoln and Woodward	0	3
9. Provide path through Poppleton as an alternative to Wil	0	0
10. Provide connections to Manor Park	1	0
11. Provide signage to trail on north side of Maple to find trail	1	0
12. Follow through with proposed block crosswalk improvements at Villahazel, Bowers, and Haynes where existing pathways intersect	1	0
13. Like the proposed pedestrian access on the Birmingham to the Future Troy Transit Center	4	0
14. Like pedestrian crossing improvements on Eton north of	2	0
15. 14 Mile at Woodward, make easier to cross is two white lines, timing requires running, northbound turns westbound 14 Mile is very fast	4	0
16. How to safely cross Woodward at Emmons/Chapin	0	0
17. 14 Mile Road at Woodward is not safe to	1	0

CITY OF BIRMINGHAM MULTIMODAL TRANSPORTATION PLAN / ? D b = COMMUNITY VISIONING WORKSHOP RESULTS SIGNALIZED INTERSECTION RECOMMENDATIONS

1- OAK & CHESTERFIELD



Signalized Alternative																			
Non-Signalized Alternative	X																		

2- ADAMS & BUCKINGHAM



Signalized Alternative																			
Non-Signalized Alternative	X																		

3- WILLITS & BATES



Signalized Alternative																			
Non-Signalized Alternative	X																		

4- OAKLAND & PARK



Signalized Alternative																			
Non-Signalized Alternative	X																		

5- MAPLE & CHESTERFIELD

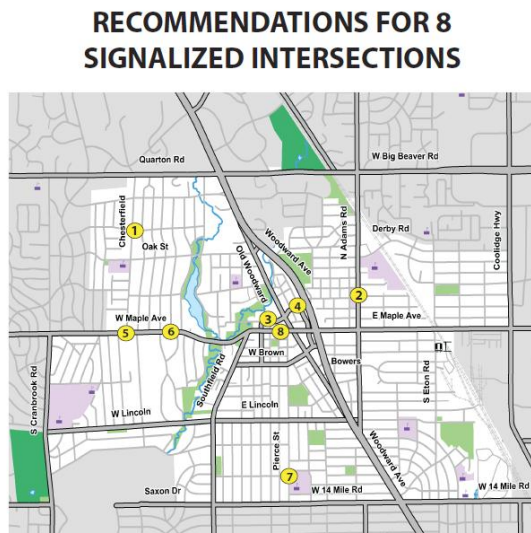


Signalized Alternative																			
Non-Signalized Alternative	X																		

6- MAPLE & LAKE PARK



Signalized Alternative																			
Non-Signalized Alternative	X																		



8- MAPLE & HENRIETTA



Signalized Alternative																			
Non-Signalized Alternative	X																		

7- PIERCE & SOUTHLAWN



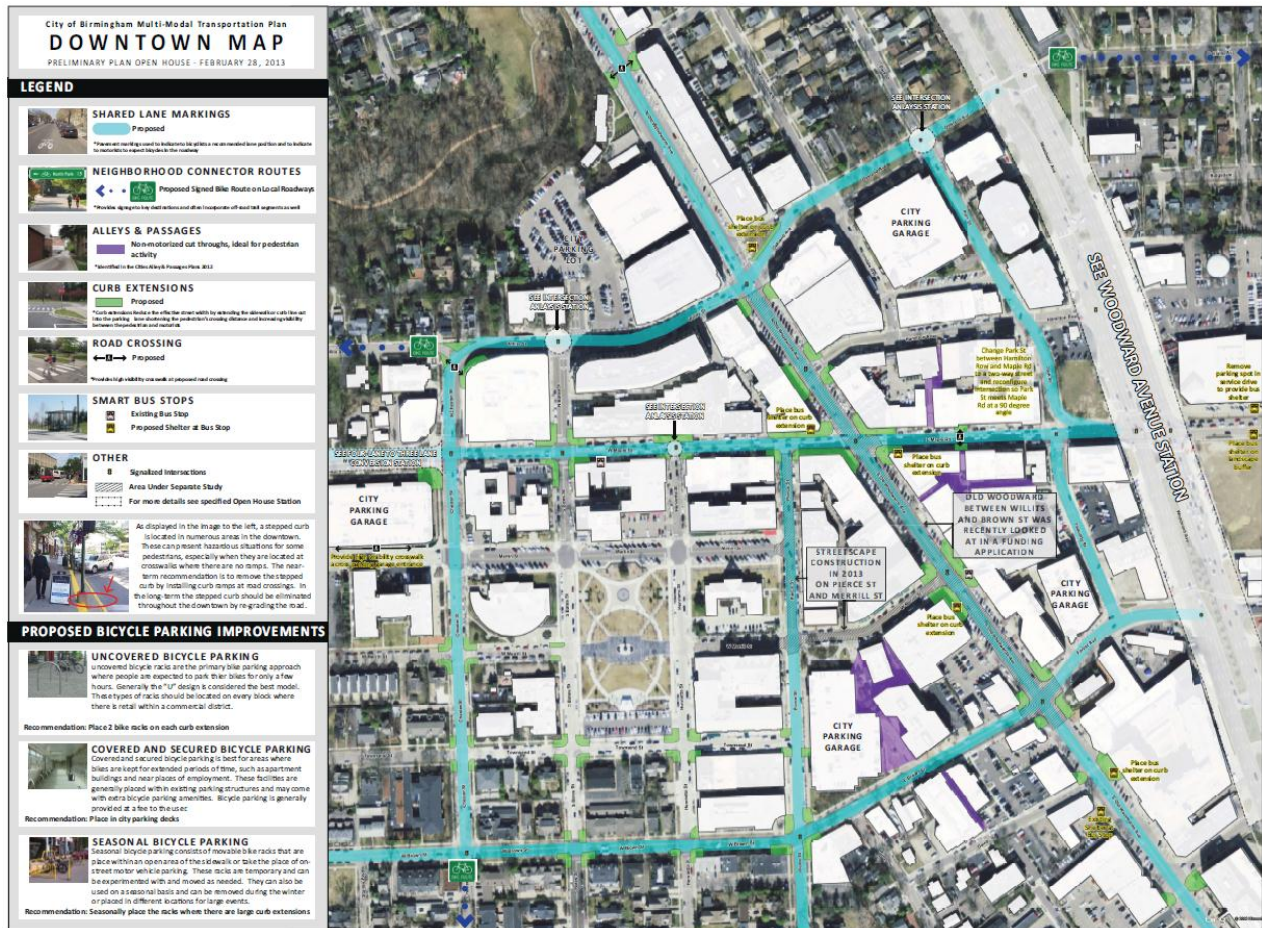
Signalized Alternative																			
Non-Signalized Alternative	X																		

Participants Comments:	Number of Participants that AGREED	Number of Participants that DISAGREED
1. W Lincoln near High School problems at drop off and pick times with buses	2	0
2. Brown between Old Woodward and Southlawn Plenty of ped crossings but cars do not stop	4	0
3. E and W Lincoln) sbut how will you address cars stopping?	4	0
4. Change left turn on to Buckham from southbound Adams flashing red on red light (allowing turns into Buckingham southbound Adams	2	0
5. Fully agree with signalized intersection # 7 (Pierce and Southlawn)	2	1
6. Keep light #2 (Adams & Buckingham) at Adams t would be very difficult to get out on Adams this the light for walking town	2	0

7. Keep light #2 (Adams & Buckingham) for kids to cross	1	0
8. No roundabout on Oak and Chesterfield	0	2
9. People always complaining about how unsafe they feel driving north at Southfield and Maple. Southfield traffic too fast	1	0
10. Like idea of adding street parking to Oakland Ave between Park and Ferndale	1	0
11. Vague urban extensions	0	2
12. No new islands, no weaving of motor traffic!	0	2

CITY OF BIRMINGHAM MULTI-MODAL TRANSPORTATION PLAN / ? D b = COMMUNITY VISIONING WORKSHOP RESULTS

DOWNTOWN MAP



Participants Comments:	Number of Participants that AGREED	Number of Participants that DISAGREED
1. Makes Bates a shared lane for bikes between Maple and Mile Road	2	1
2. N. Chester at Willits St currently awkward for bikes crossing	1	0
3. Like proposals	3	0

CITY OF BIRMINGHAM MULTIMODAL TRANSPORTATION PLAN / ? D b =
COMMUNITY VISIONING WORKSHOP RESULTS

ADA TRANSITION PLAN

Participants Comments:	Number of Participants that AGREED	Number of Participants that DISAGREED
1. This is required by federal law	2	0
2. Would love to see this changed!	2	0

